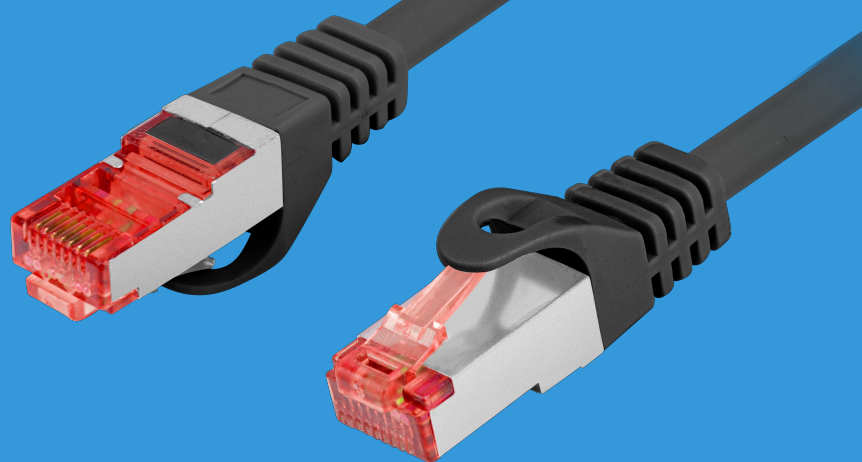


PCF6-10CU-0500-BK

PATCH CABLE CAT.6



PRODUCT FEATURES:

- S/FTP shielding type – Aluminium braid on wire and each pair foiled additionally
- The coating is made of low-smoke and Halogen-free materials (LSZH)
- Category compliance confirmed by Fluke tester
- Stranded wires made from pure copper

PRODUCT SPECIFICATION:

Cable length	500 cm
ICT category	Cat. 6
Shielding type	S/FTP
Colour	Black
AWG	26
External lagging	5,7 mm
Maximum operating frequency	up to 250 MHz
Material	Copper (CU)

